

Luxury.
Architecture.
Lifestyle.



LARA MEWS

**LUXURY MAISONNETTES &
PENTHOUSES**



LARA MEWS SNAPSHOT

TOTAL PROPERTY SIZE - 610 SQM

FEATURES:

2 Bedroom Luxury Maisonette



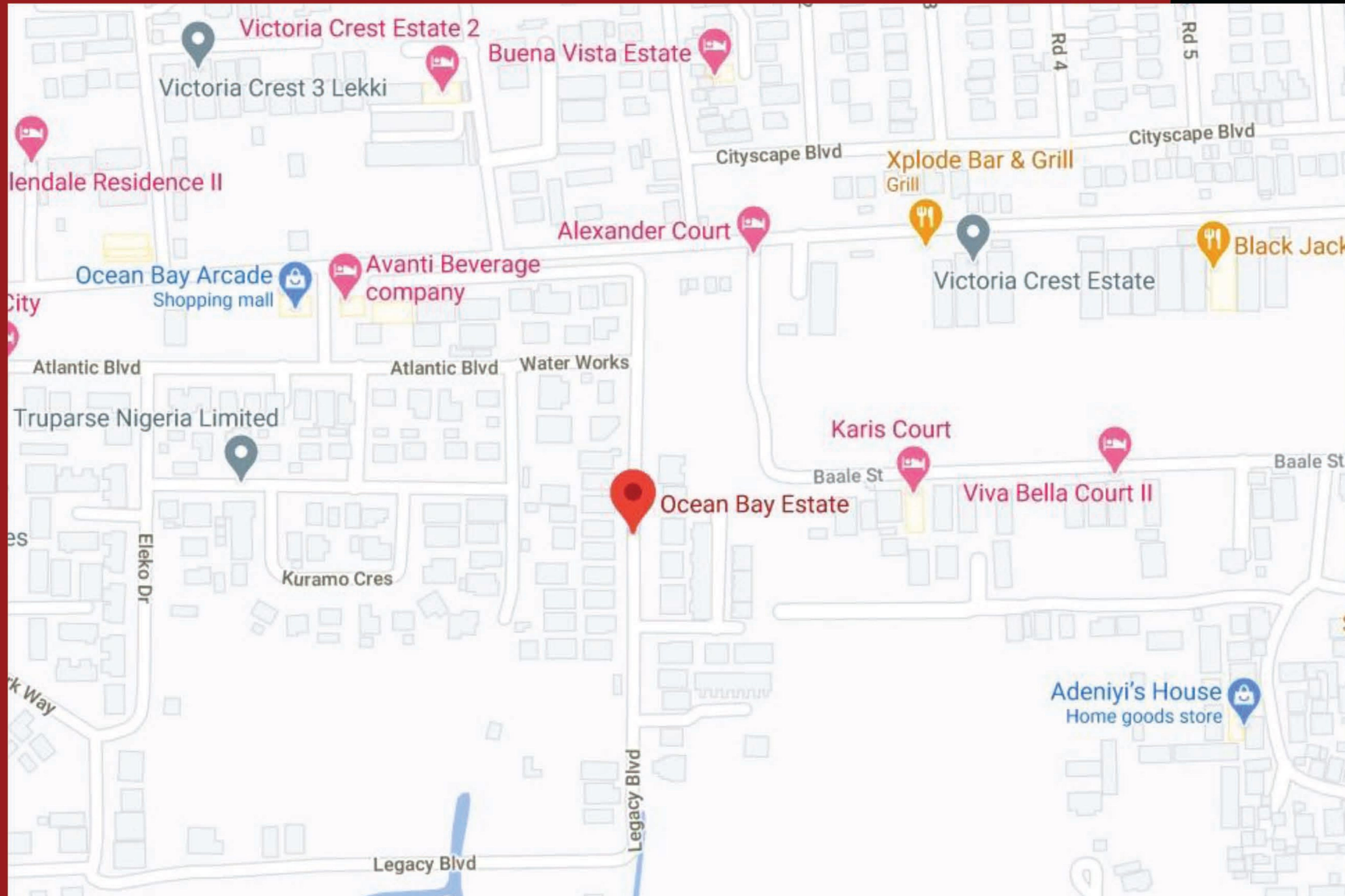
“We shape our buildings
thereafter our buildings
shape us.”



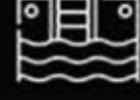
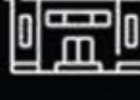



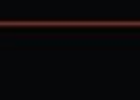
Winston Churchill



LOCATION

Premium Location, Exquisite Neighbourhood



-  Good Roads
-  Bars & Restaurants
-  Sport/Recreation
-  Schools
-  Malls
-  Drainage System
-  Security
-  Banks & Centers

LIVING ROOM

Exquisite craftsmanship, detailed finishing & aesthetical masterpiece.

Each apartment has a contemporary, sophisticated feel and offers owners the finest in materials and finishes.

The living areas use light-toned colour schemes, impressive textures and light features to give it a unique feel and other exotic features to give our owners a true taste of comfort.







**Live Differently.
Live Stylishly.
Live Luxuriously.**

BEDROOM

An artistic and seamless blend of contemporary architecture with a unique and generous dose of style.

Feel the grandeur the moment you step into this ultra-modern bedroom built to give you a feeling of comfort and security.



- Pendant Lights
- Home Automation
- High Floor to Ceiling
- Spot Lights
- Perfect Finishing





BATHROOM

A faucet of Luxury.

Our bathrooms with premium sanitary fittings make shower time the best part of your day.

Relish the comfort of our masterfully finished bathrooms with premium sanitary wares artistically inspired, designed for royalty.



Lara Mews is an architectural masterpiece, skillfully crafted to challenge the norm in style and design.





**Opulence.
Influence.
Affluence.**



KITCHEN

Kitchen is the heart of every home, for most part of it. It evokes memories of your family history.

This modern, state of-the-art open-plan kitchen combined with high end appliances is a delight for families who enjoy home-made meals. Either you love to spend time hanging around the kitchen or you love to cook, our functional and exquisite design makes it a joyful experience for you.





FEATURES & FACILITIES



2-Bedroom Maisonette



2-Bedroom Penthouse



En-suite Bathrooms



24/7 Security



High Quality Fittings



Lake View



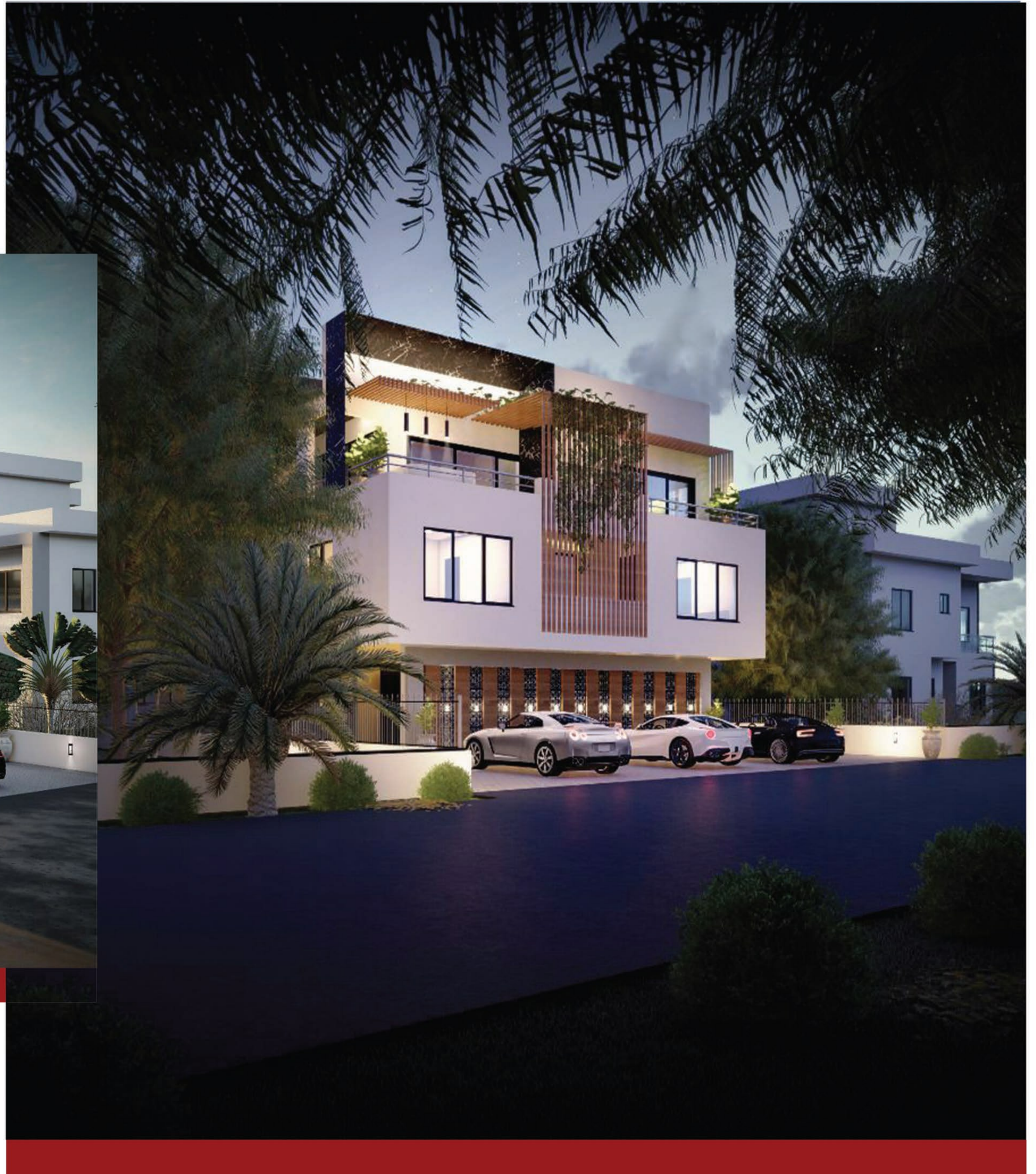
Modern Kitchen



Large Windows

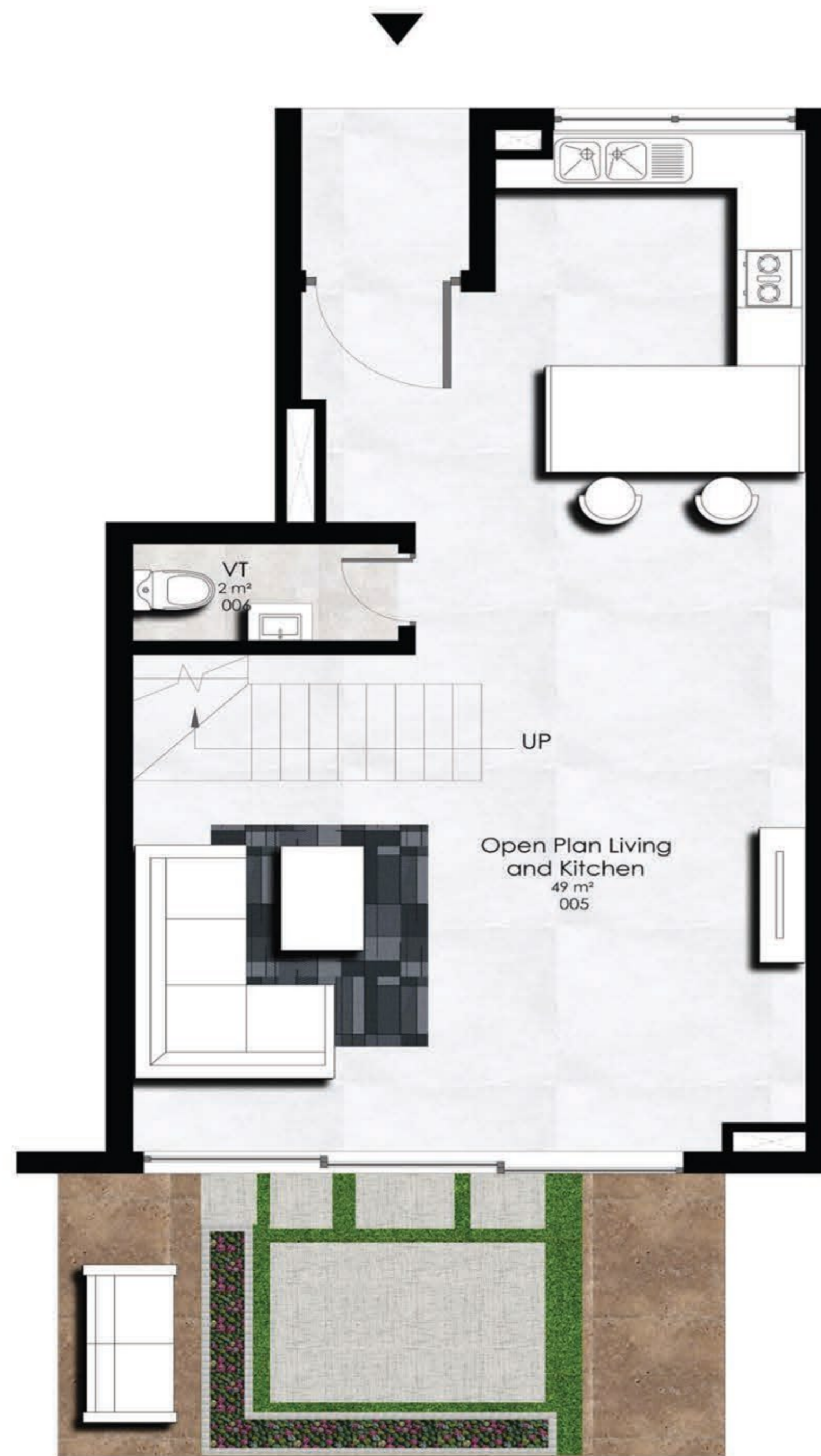


Home Automation



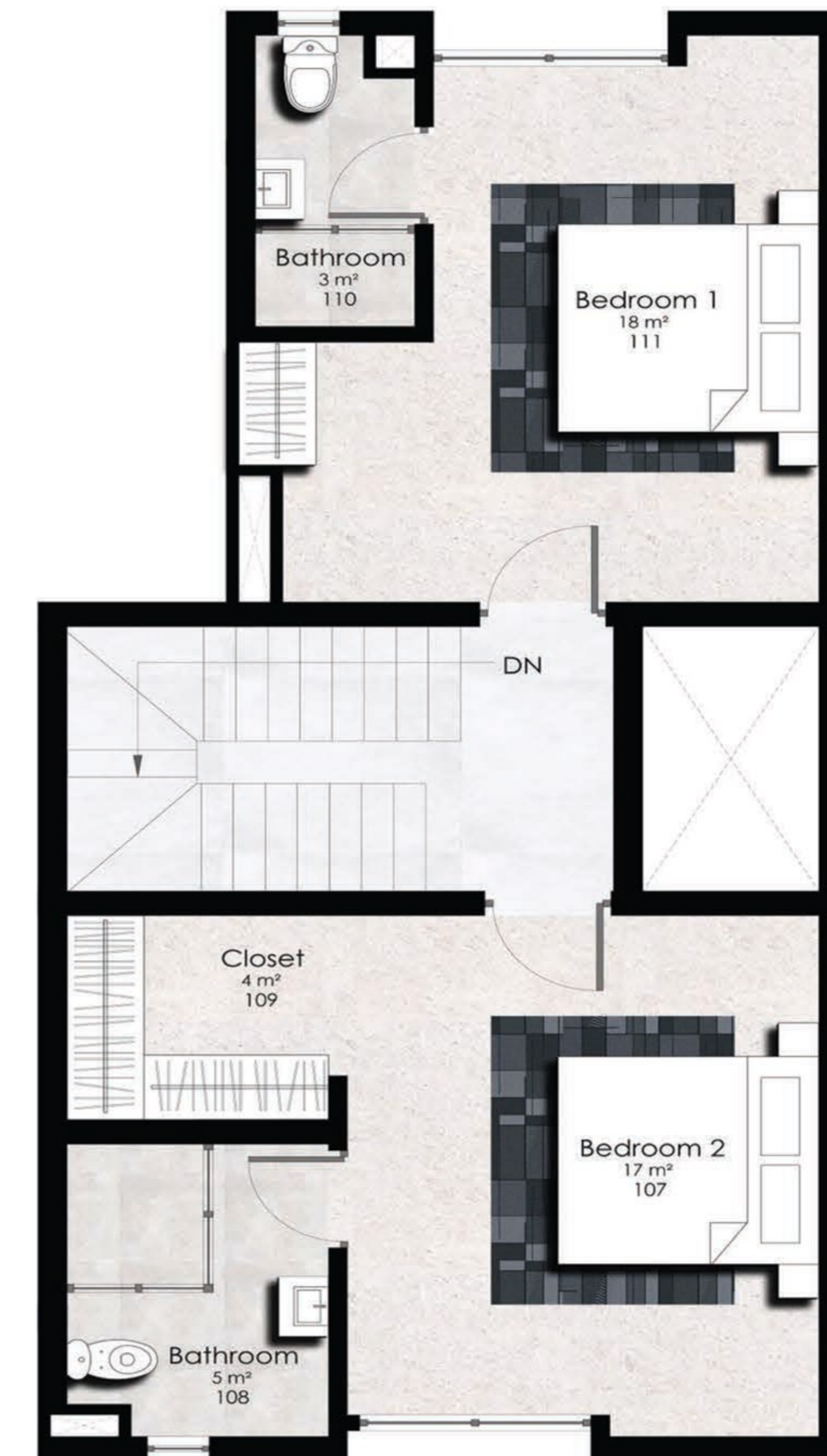
2-BEDROOM MAISONETTE/MIDDLE UNIT

Ground Floor



Living Area and Open Plan Kitchen	49 Sq.m
Visitor's Toilet	2 Sq.m

First Floor



Bedroom 1	18 Sq.m
Toilet/Bathrooms 1	3 Sq.m
Bedroom 2	17 Sq.m
Toilet/Bathroom 2	5 Sq.m
Closet	4 Sq.m

2-BEDROOM MAISONETTE/REAR UNIT

Ground Floor



Living Area and Open Plan Kitchen	47 Sq.m
Store	2 Sq.m
Visitor's Toilet	2 Sq.m

First Floor



Bedroom 1	19 Sq.m
Toilet/Bathrooms 1	3 Sq.m
Bedroom 2	25 Sq.m
Toilet/Bathroom 2	5 Sq.m
Store	2 Sq.m

INVESTMENT

**Don't wait to buy real estate,
buy real estate and wait.**

Setting new standards for luxurious living. Lara Mews is a unique opportunity designed to acquire exceptional homes in a premium locality.



PARTNERS

Mechanical & Electrical
Consultant



Architect



Project Manager



*** Exclusive of connection fee.

INVESTMENT

PROJECTED PROPERTY VALUATION

Sale Yield

Year 3: 23.84% appreciation

Year 5: 36.22% appreciation

Year 10: 67.18% appreciation

Shortlet and Rental Yield

Rental Yield: 6.5% per annum

Shortlet Yield: 40% occupancy rate (12% per annum)

PAYMENT SAFEGUARDS

We offer flexible payment plans with instalments due only at development milestones/dates agreed in the offer letter.

Clients will also get regular updates on progress of the project to keep them informed and assured that their funds are safe.








“Luxury doesn’t have to break the bank.”

3b, Unity Close, Off Africa lane, Lekki Phase 1, Lagos 

+234 816 848 1603 or +234 806 895 8046 

www.powerviewltd.com 

powerviewgroup  